

# KEY SUMMARY POINTS



# Key Summary Points



## Project Progress W/E 02/04/2026

### Health & Safety

- No H&S issues to discuss.

### Design Update - Render

- Render design is in place

### Design Update – Glass & Aluminum Spandrel Panels

- Spandrel panel Design in place.

### Design Update - Terracotta

- Terracotta Design in place.

### Procurement

- EPDM & Breather membrane has been delivered.
- Render material has been delivered.
- Terracotta bracket & rails have been delivered.
- Insulation for terracotta area has been delivered.
- Cavity Barrier order has been delivered

# Key Summary Points



## Project Progress W/E 24/04/2026

### Production

- Phase 1, Render works on hold due to another batch of loose blockwork – **RM has issued remediation costs on 30.03.26** – Awaiting Instruction 24/04/2026 **Causing a delay to programme.**
- Phase 2, Cladding/Render removal 100% complete, Blockwork checked and fine.
- Phase 2, 24/04/2026, Terracotta and Render Install in progress

### Resident Liaison Matters

- The next resident Hub Update will be 01.05.26
- Awaiting Agreement for the scaffold to go up and over Neighbors terrace 24-4-2026 – **Causing a delay to programme.**
- Has the residents in the units on the ground floor been made aware their Air Conditioning units will be removed W/C 13/04/2026 – Awaiting confirmation 24/04/2026 – **Causing a delay to programme**

# PHOTOGRAPHIC EVIDENCE

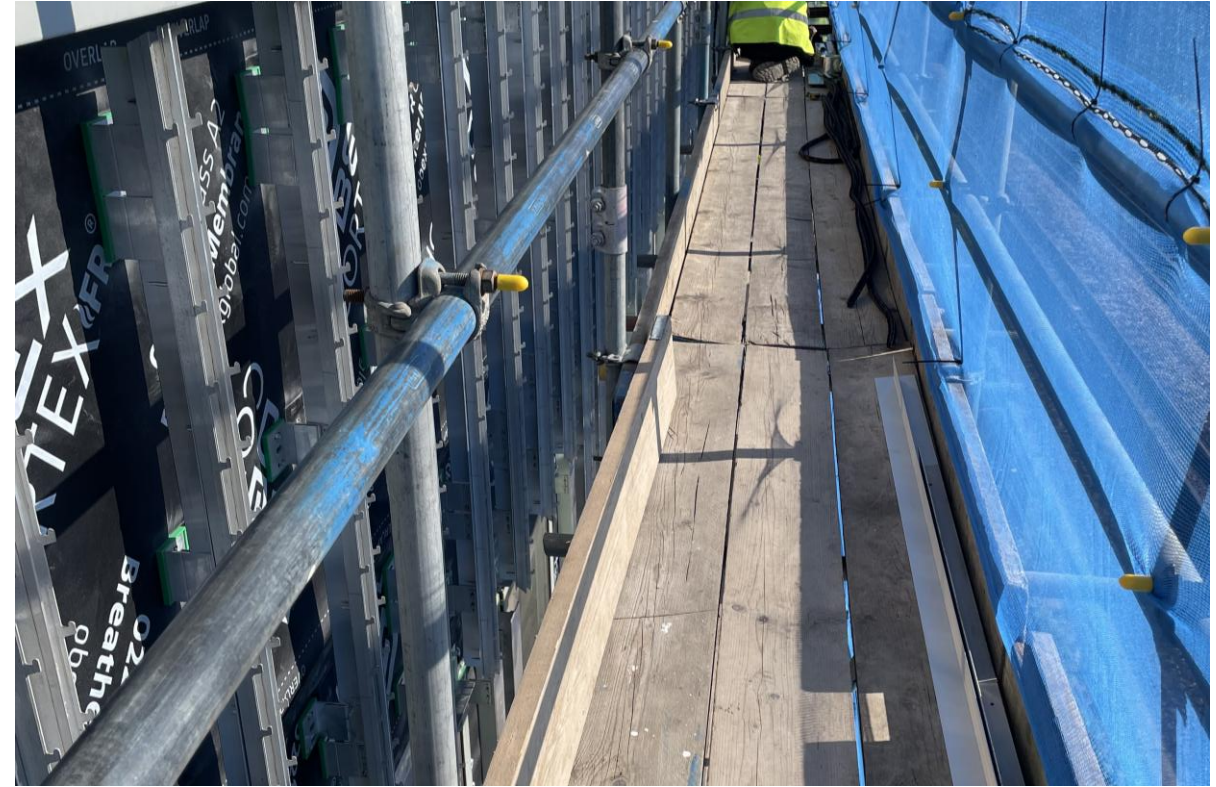


# Photographic Evidence



**Installation of Rails/Fire Barrier & Insulation**

Phase 2 (East Elevation Top Lift Scaffold)



**Installation of EDPM/Brackets & Rails**

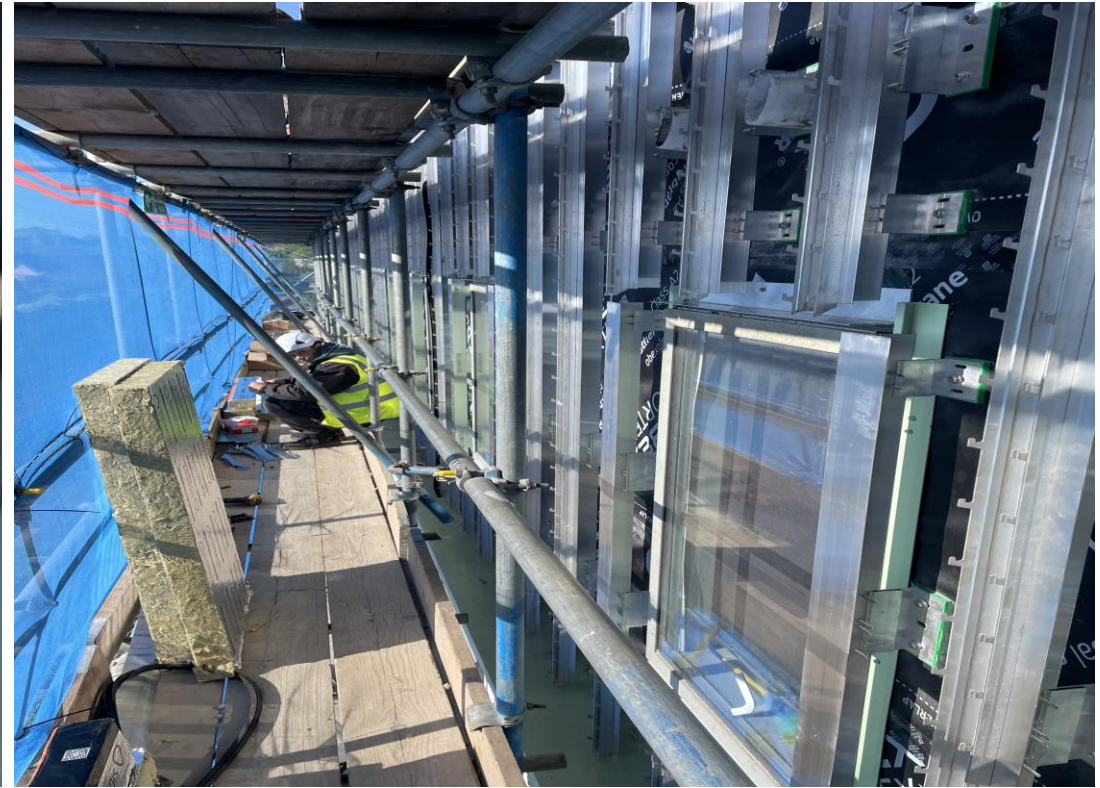
Phase 2 (East Elevation Top Lift Scaffold)

# Photographic Evidence



**Installation Of Rails & Insulation**

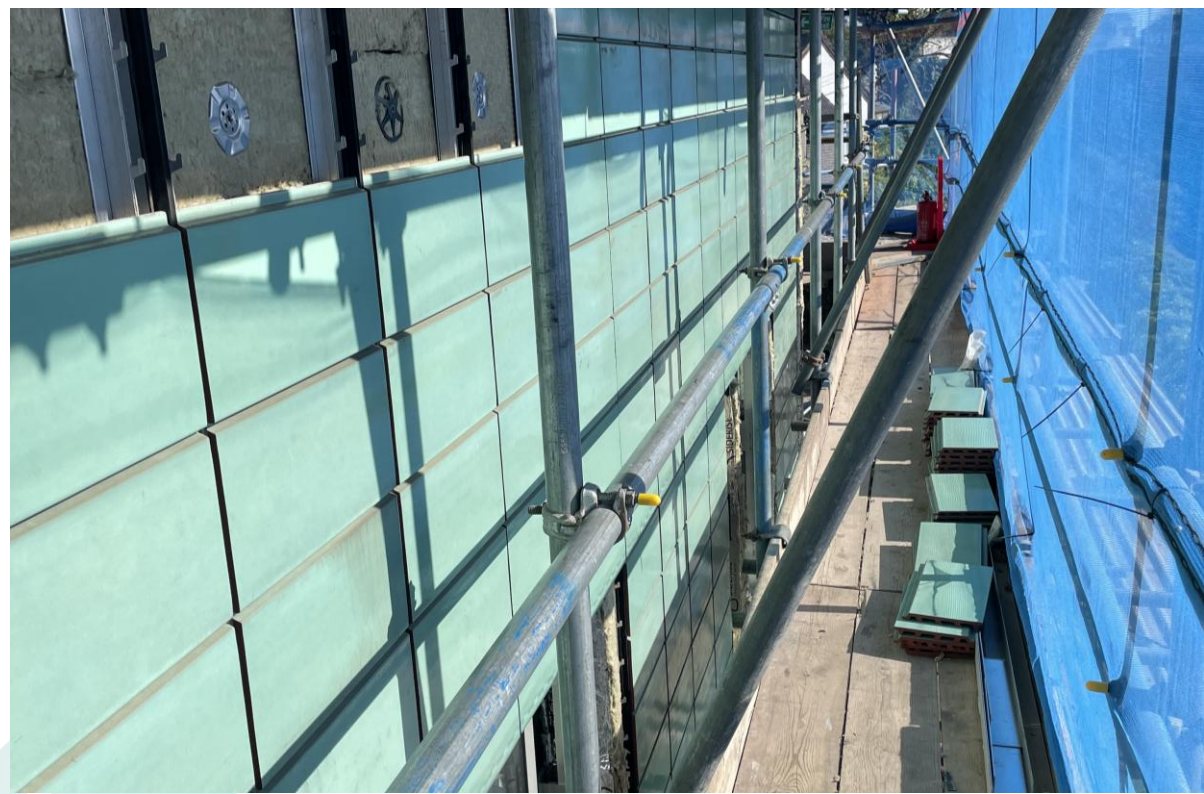
Phase 2 (East Elevation Middle lift scaffold)



**Installation Of Brackets & Rails**

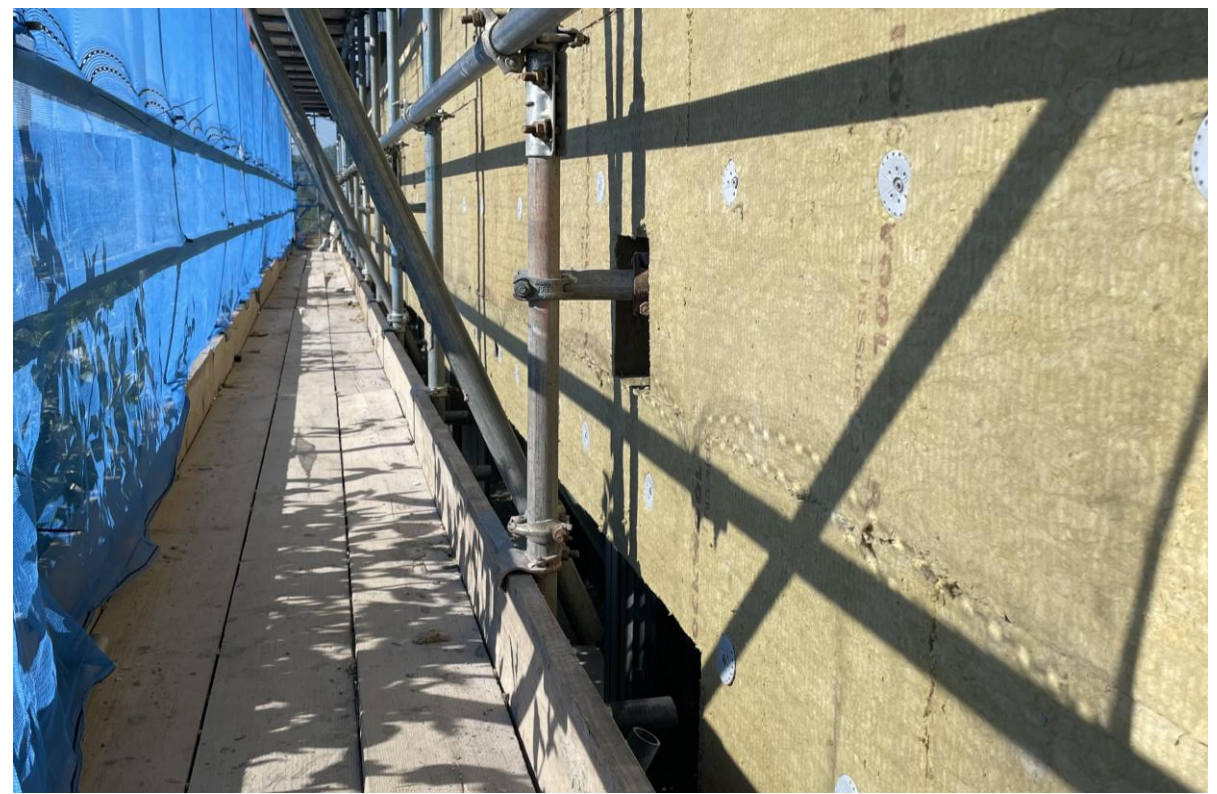
Phase 2 (East Elevation Middle Lift Scaffold)

# Photographic Evidence



Installation Of Terracotta Tiles

Phase 2 (East Elevation)



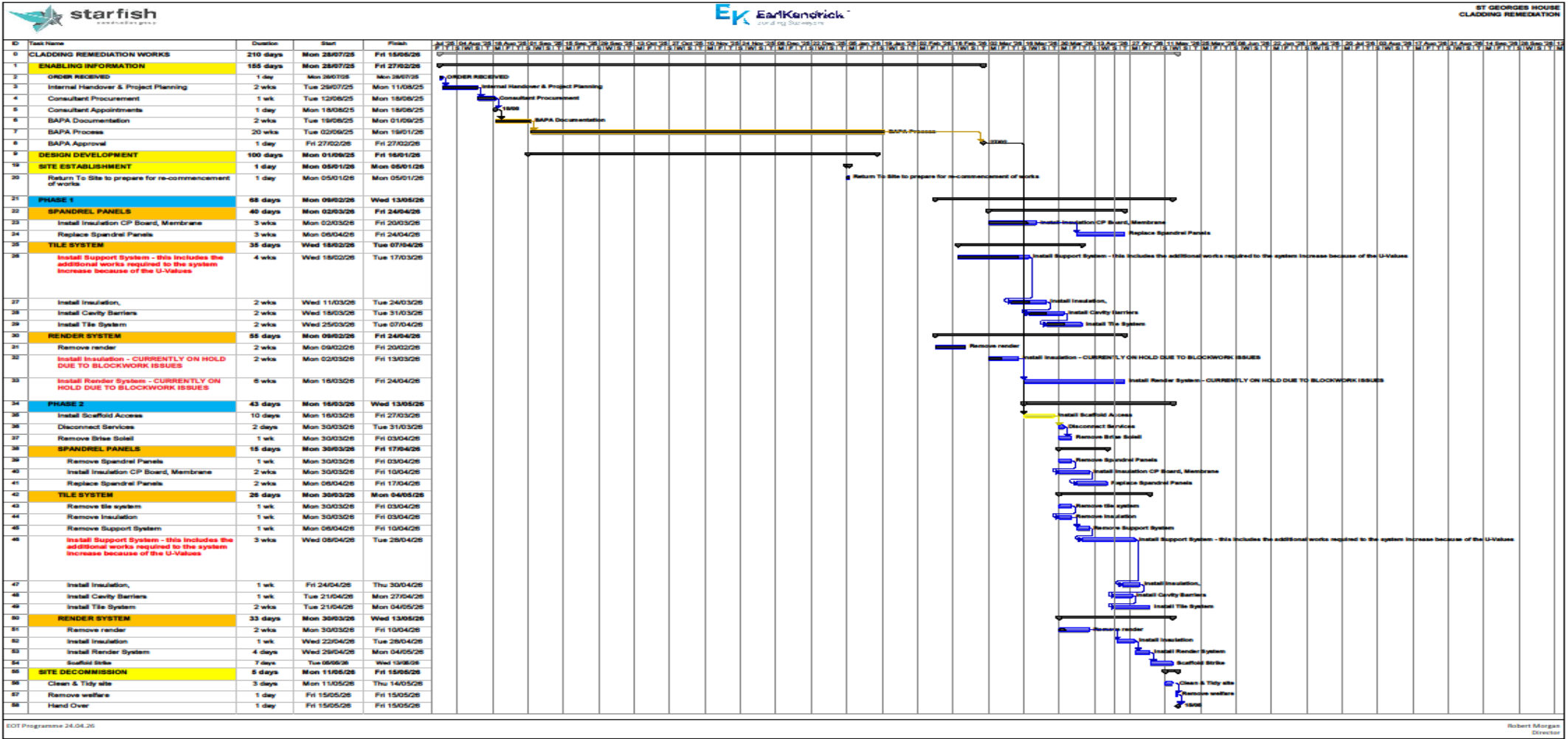
Installation Of Render System

Phase 2 (East Elevation)

# PLANNING & PROGRAMMING



# Programme Rev D Update 24.04.2026



# Planning & Programming next week

W/C 27/04/2026

- Phase 2 Continuation of Terracotta Tile Install.
- Phase 2 Continuation render system Install

